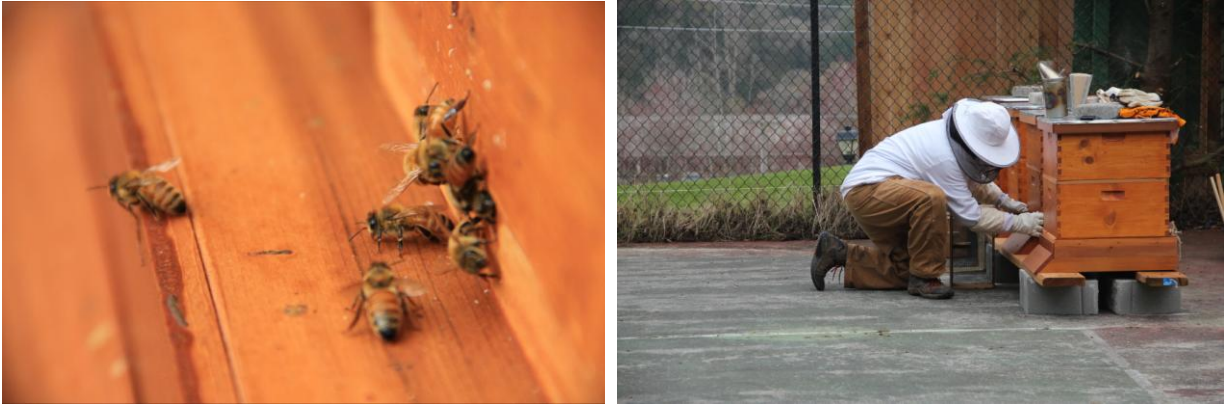


THINGS ARE BUZZING AT SNOQUALMIE FALLS: 120,000 HONEYBEES LAND AT THE SALISH LODGE & SPA

Iconic Pacific Northwest lodge launches program to produce signature honey on property



Caption L-R: Salish Lodge's newest guests arrived in late April, the lodge anticipates between 650 and 800 pounds of honey by 2012; Beekeeper Daniel Sullivan installing the hives

Snoqualmie, Wash. (April 29, 2011) – Salish Lodge & Spa and beekeeper Daniel Sullivan, proprietor of Shipwreck Honey in West Seattle, announce the successful installation of a four-hive, 120,000 honeybee apiary, located on the hillside overlooking the hotel and Snoqualmie Falls. The Lodge anticipates the new hives will yield between 650 and 800 pounds of a light, classic honey to be collected and integrated into its indigenous Northwest cuisine, signature treatments in The Spa and in retail outlets throughout the Lodge in 2012.

“We have been searching for the perfect opportunity and partnership to bring honeybees to Salish for a long time. When we met Daniel and learned about the passion and care that goes into his work, we knew it was a match made in heaven,” said John Murphy, general manager at Salish Lodge. “With his dedication to ensuring that our hives flourish and produce, we expect to share our truly local, sustainable, signature Salish honey with our guests within one year. It doesn’t get more local than this and our excitement simply cannot be contained.”

The busy colonies will spend the next eight months building honeycomb, nurturing their brood in various stages of development, collecting pollen and producing enough honey to sustain the colony through the winter. Sullivan, whose own private label Shipwreck Honey-producing hives are tucked away in an undisclosed oasis in West Seattle, will visit to check on the Salish honeybees every seven to ten days.

“Salish Lodge is to be commended for taking steps to develop a program for an onsite apiary in a region that has largely yet to do so,” said Sullivan. “They have embraced the importance of sustaining the honeybee population and will create a unique, organic, artisan honey in the process. I’m very proud to be partnering with the lodge on this venture.”

As the honeybees busy themselves building their new homes, the team at Salish Lodge is crafting a comprehensive program for their soon-to-be Salish honey reserves. Murphy confirms that one

intended use for the final product will be in the “Honey from Heaven” dining experience, served as part of the legendary four-course Country Breakfast, a lodge favorite since 1916. The “Honey from Heaven” tradition requires a server to stand atop a stool, while pouring honey from four feet above the table in long, golden strands to the fresh biscuits and oatmeal below.

A lineup of new honey-based treatments in The Spa are also in development, including a Salish Milk and Honey Bath, Salish Oatmeal and Honey Body Treatment, and Honey from Heaven for the Hands and Feet.

“The beauty benefits of honey have long been recognized,” says Melanie Silver, spa director at Salish Lodge. “Honey moisturizes, is rich in anti-oxidants and protects the skin from damage caused by UV rays, and is also known to possess an excellent anti-aging essence. The new honey-based offerings will be an ideal complement to our treatment menu featuring indigenous Pacific Northwest ingredients.”

The Salish honeybee apiary will not be accessible to the public. To learn more about Salish Lodge & Spa, visit www.salishlodge.com or call 1.800.2.SALISH.

About Salish Lodge & Spa

Consistently ranked among the best small resorts in the world, the AAA Four Diamond Salish Lodge & Spa overlooks the 268-foot Snoqualmie Falls. This iconic Pacific Northwest lodge offers regionally-inspired treatments at the world-renowned spa, indigenous Northwest cuisine in The Dining Room, an award-winning wine list and a variety of recreational activities. Nestled in Washington’s picturesque Cascade Mountains, each of its 89 recently renovated guest rooms has a wood-burning fireplace, two-person whirlpool tub, goose-down comforter, feather bed and balcony or window seat. The resort is located 30 minutes east of downtown Seattle and within 40 minutes from Seattle-Tacoma International Airport. Salish Lodge & Spa is managed and operated by Seattle-based Columbia Hospitality, Inc. For more information or reservations, please call 800-2-SALISH or visit www.salishlodge.com.

About Columbia Hospitality

Columbia Hospitality, Inc. (Columbia), a Seattle-based hospitality management and consulting firm specializing in luxury hotel and resort management, was founded in 1995 by John Oppenheimer. Columbia’s growing portfolio of premier properties, including boutique hotels, award-winning resorts, event venues and conference centers, offer world-class service in exquisite settings. Columbia creates memorable experiences for guests and team members while achieving phenomenal results for owners. The company’s continued success has led to an international expansion of the consulting division and more than 100 hospitality development projects worldwide. For more information about Columbia and a full list of properties visit www.columbiahospitality.com.

###

MEDIA CONTACTS:

Hamilton McCulloh / Erin Petrie

GreenRubino

206-447-4747

hamiltonm@greenrubino.com / erinp@greenrubino.com